



46th ILO-CIS Annual Meeting, 29 Jun 2008
Seoul, Korea

Toh Jing Yi
Head (Business Intelligence)
Occupational Safety & Health Division
Ministry of Manpower, Singapore





Our Vision

**A safe and healthy workplace for everyone;
A country renowned for best practices in
workplace safety and health**



Info Sharing With Industry and General Public

- MOM Website 
- WSH Council Portal 
 - Educational Materials
- eAlerts on WSH (WSH Alerts)
- National WSH Campaign 2008
- WSH Seminars
- Leveraging on media to heighten awareness of WSH issues



Search

powered by
Google™

Within MOM Website



[Home](#) | [Services & Forms](#) | [Statistics](#) | [Publications](#) | [Legislation](#) | [Press](#)

[About Us](#) | [Careers at MOM](#) | [Help](#)

[Employer](#)

[Employee](#)

[Work Pass](#)

[Workplace Relations and Standards](#)

[Workplace Safety and Health](#)



FAQs

(Frequently Asked Questions)

Workplace Safety and Health

» Planning for a Safe and Healthy Workplace

- » The Occupational Safety and Health (OSH) Framework
- » Registration for Workplaces (Licences)
- » Registration for Pressure Vessels and Lifting Equipment

[more...](#)

» Maintaining a Safe and Healthy Workplace

- » Safety and Health Management System
- » OSH Programmes
- » Incidents - Reporting, Investigations and Work Injury Compensation

[more...](#)

» Building Capabilities

- » Developing Competencies through Training
- » Best Practices
- » Managing Workplace Hazards

[more...](#)

» Events, Awards and Incentives

- » Events
- » Awards
- » Incentives

[more...](#)

» Accredited Service Providers

- » List of Accredited Professional Services
- » Workplace Hazard Service Providers
- » Application to Provide Equipment & Services

[more...](#)

» Reports and Statistics

- » Annual Reports & Work Health Reports
- » Workplace Safety & Health Statistics

[more...](#)

Good Practices in Health Hazards Control

This compilation features case studies of workplace health hazards control in Singapore. To search for cases, select one or more of the fields below.

Click LIST ALL to view the lists of case studies.

Hazards	<input type="text" value="Chemical"/>
Industry	<div><div>Metal Working and Machinery</div><div>Paper and paper products</div><div>Pharmaceutical</div><div>Printing</div><div>Retail, business, hotel & catering, healthcare and other services</div><div>Transport equipment</div></div>
Keywords	<input type="text"/>
<div><input type="button" value="Search"/> <input type="button" value="List All"/></div>	

* To select more than one industry type, click on the industry while pressing your CTRL button.

Database comprises 95 case studies, from the experiences of past OSH Award winners :

- Noise - 57
- Chemical - 18
- Ergonomics & IAQ - 14
- Safety - 6

[Glossary](#) | [Contributors](#)

Disclaimer

The practical solutions shown are solely for the purpose of information sharing on the basis that they



Managing Workplace Hazards

 [Print This Page](#)

 [Email This Page](#)

Guidelines Factsheets and Circulars

Publications on managing workplace hazards are available on the following topics:

- › [Air Quality](#)
- › [Biological](#)
- › [Chemicals](#)
- › [Diseases](#)
- › [Ergonomics](#)
- › [Explosion/Fire](#)
- › [Machinery/Equipment](#)
- › [Noise and Vibration](#)
- › [ProBE Technical Advisories](#)
- › [Safety](#)
- › [Workplace Safety and Health Act and Subsidiary Legislations Guides](#)
- › [Workplace Safety and Health Posters](#)

Occupational Safety and Health Risk Compendiums

Download the OSH Risk Compendiums which covers topics from the various industries.

- › [Chemical](#)
- › [Construction](#)
- › [Metalworking](#)
- › [Shipyard](#)

Approved Codes of Practice Made Under Section 39 of the Workplace Safety and Health Act


In accordance with section 39 (3) of the Workplace Safety and Health Act 2006, the Commissioner has approved 23 Codes of Practice for the purpose of providing practical guidance on safety and health to the industry. The Approved Codes of Practice (ACOP) is intended to be used as a yardstick to assess whether reasonable practical measures have been taken in regards to the upkeep of safety and health standards at the workplace. A notice of the issue of the ACOPs has been published in the [Government Gazette](#).

All the Code of Practices and Singapore Standards listed below are published by SPRING Singapore and can be purchased at www.singaporestandardseshop.sg 

- **CP 14: 1996**
Code of Practice for Scaffolds
- **CP 20: 1999**



Search

powered by


Within MOM Website



[Home](#) | [Services & Forms](#) | [Statistics](#) | [Publications](#) | [Legislation](#) | [Press](#) | [About Us](#) | [Careers at MOM](#) | [Help](#)

[Employer](#)

[Employee](#)

[Work Pass](#)

[Workplace Relations and Standards](#)

[Workplace Safety and Health](#)



FAQs
(Frequently Asked Questions)

Workplace Safety and Health

» Planning for a Safe and Healthy Workplace

- » The Occupational Safety and Health (OSH) Framework
- » Registration for Workplaces (Licences)
- » Registration for Pressure Vessels and Lifting Equipment

[more...](#)

» Maintaining a Safe and Healthy Workplace

- » Safety and Health Management System
- » OSH Programmes
- » Incidents - Reporting, Investigations and Work Injury Compensation

[more...](#)

» Building Capabilities

- » Developing Competencies through Training
- » Best Practices
- » Managing Workplace Hazards

[more...](#)

» Events, Awards and Incentives

- » Events
- » Awards
- » Incentives

[more...](#)

» Accredited Service Providers

- » List of Accredited Professional Services
- » Workplace Hazard Service Providers
- » Application to Provide Equipment & Services

[more...](#)

» Reports and Statistics

- » Annual Reports & Work Health Reports
- » Workplace Safety & Health Statistics

[more...](#)



WSHCOUNCIL

A safe and healthy workplace for everyone



[Contact Us](#) | [Feedback](#) | [Sitemap](#)

Search Go

[Home](#) | [About Us](#) | [Publications](#) | [News Room](#) | [WSH Gallery](#) | [Useful Links](#) | [Join Us](#)

WSH 2015

ProBE

bizSAFE

RMAF

ConSASS

Awards

NWSH Campaign

WSH Training

Resources

Events Calendar



[Home](#) > [WSH 2015](#)

WSH 2015

[Tell a Friend](#) [Print](#)

Workplace Safety and Health Strategy 2015



The unveiling of the new WSH framework in March 2005 and the introduction of the WSH Act on 1 March 2006, marked a new phase of development for WSH in Singapore. Making the change more challenging was the setting of a 10-year target to halve the number of work-related fatalities to 2.5 per 100,000 workers by 2015.

The Strategy to Raise Standards

Educational Materials on WSH



Brochures on biz SAFE programmes



Brochures on PROBE programmes

Going on to Level 2 and 3

For Level 2, your company must achieve a 100% compliance rate in the OSH Management System (OMS) Implementation Plan for your company. Your company must also achieve a 100% compliance rate in the OSH Management System (OMS) Implementation Plan for your company. Your company must also achieve a 100% compliance rate in the OSH Management System (OMS) Implementation Plan for your company.

The journey continues

For Level 3, your company must achieve a 100% compliance rate in the OSH Management System (OMS) Implementation Plan for your company. Your company must also achieve a 100% compliance rate in the OSH Management System (OMS) Implementation Plan for your company. Your company must also achieve a 100% compliance rate in the OSH Management System (OMS) Implementation Plan for your company.

Protect your employees by Building Safety and Health in your Business

WSHAC



SHINE newsletter

Educational Materials on WSH



Compliance Assistance Checklist



6 Maxwell Road
#28-06 Tower Block
RND Complex
Singapore 069110
Tel: (65) 6324 7579
contact@wshe.gov.sg
www.wshe.gov.sg



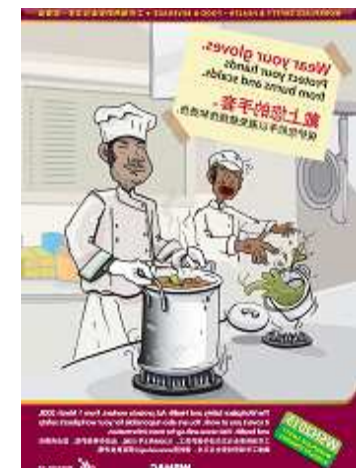
6 Maxwell Road
#28-06 Tower Block
RND Complex
Singapore 069110
Tel: (65) 6324 7579
contact@wshe.gov.sg
www.wshe.gov.sg

CHECKLIST FOR FIXED MOUNT TOWER CRANE USERS

This checklist provides an overview of the basic requirements which would help to ensure that a tower crane is safe for use. Tower crane users should work with suppliers / owners to meet these minimum requirements and address any concerns before the use of these lifting equipment.

The items in this checklist are non-exhaustive and users are encouraged to make modification and adaptation to suit to their work processes and conditions or the workplace.

A. EQUIPMENT APPROVED FOR USE		SUGGESTED EVIDENCE	Yes	No
1	Tower crane is of type-approved by MOM (registered with effect from 1 April 2001)	• type approval document	<input type="checkbox"/>	<input type="checkbox"/>



Technical Advisories For Priority Areas

Guidelines on WSH





WSHCOUNCIL

A safe and healthy workplace for everyone

Singapore Government
Integrity • Service • Excellence

[Contact Us](#) | [Feedback](#) | [Sitemap](#)

Search Go

[Home](#) | [About Us](#) | [Publications](#) | [News Room](#) | [WSH Gallery](#) | [Useful Links](#) | [Join Us](#)

WSH 2015

ProBE

bizSAFE

RMAF

ConSASS

Awards

NWSH Campaign

WSH Training

Resources

Events Calendar

Banners

Posters

Flyers

Logos

Videos



[Home](#) > [WSH 2015](#)

WSH 2015

[Tell a Friend](#) [Print](#)

Workplace Safety and Health Strategy 2015



The unveiling of the new WSH framework in March 2005 and the introduction of the WSH Act on 1 March 2006, marked a new phase of development for WSH in Singapore. Making the change more challenging was the setting of a 10-year target to halve the number of work-related fatalities to 2.5 per 100,000 workers by 2015.

The Strategy to Raise Standards



Banners



Logos



Posters For Different Industries

Flyers



WSH 2015

ProBE

bizSAFE

RMAF

ConSASS

Awards

NWSH Campaign

WSH Training

Resources

Events Calendar



[Home](#) > [Useful Links](#)

Useful Links

[Tell a Friend](#) [Print](#)

Local Partners

[Association of Singapore Marine Industries \(ASMI\)](#)

[Association of Small and Medium Enterprises \(ASME\)](#)

[Institution of Engineers Singapore \(IES\)](#)

[Ministry of Manpower \(MOM\)](#)

[National Trade Union Congress \(NTUC\)](#)



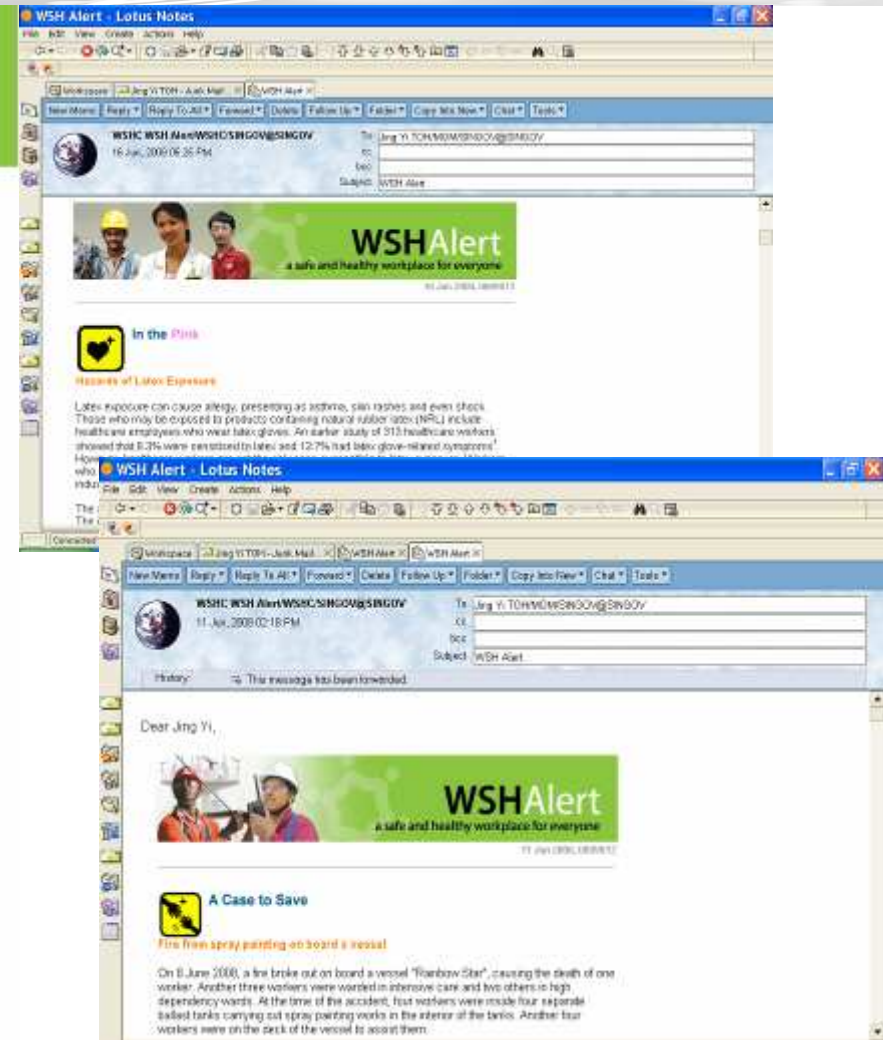
E-alert on WSH



WSHAlert
a safe and healthy workplace for everyone

BE IN THE KNOW

The latest updates on Workplace Safety and Health (WSH) issues, industry best practices, WSH statistics, legislation, courses and seminars - BE IN THE KNOW, with WSH Alert.



National Workplace Safety and Health Campaign 2008



National Workplace Safety and Health Campaign 2008

The National Workplace Safety and Health (WSH) Campaign promises a bigger and better spread of activities this year. Organised by the WSH Council, in collaboration with the Ministry of Manpower, the campaign is now celebrating its second year.

This year's theme, 'Safety starts with me' reinforces the message that everyone, from top management to safety professionals to workers, plays a part in workplace safety and health.

The WSH Council Container Exhibition

The big attraction in this year's campaign is the WSH Council Container Exhibition. Holographic displays, multimedia games and interactive exhibits on a range of WSH concerns including work at heights and work in noisy environment promise to enthrall and educate the visitor.

About the WSH Council

The WSH Advisory Committee was stepped up to the WSH Council on 1 April 2008. The Council is vested with statutory powers to spearhead national and sectoral WSH programmes and initiatives. It will partner the industry to set WSH standards, strengthen capabilities to manage WSH and build a strong WSH culture.

Find out more about the WSH Council and Campaign at www.wshc.gov.sg.

LAUNCH EVENT

ATRIUM@ORCHARD
(next to Plaza Singapura)

29 April, 5pm to 8pm

30 April - 1 May, 11am to 8pm

You can expect:

- Exciting exhibits, stage games and prizes
- Special host appearance by Y.E.S. 93.3FM DJ Bukoh Mary
- Free gifts at the WSH Council booth * while stocks last





NWSH Campaign 2008 “Safety Starts With Me”



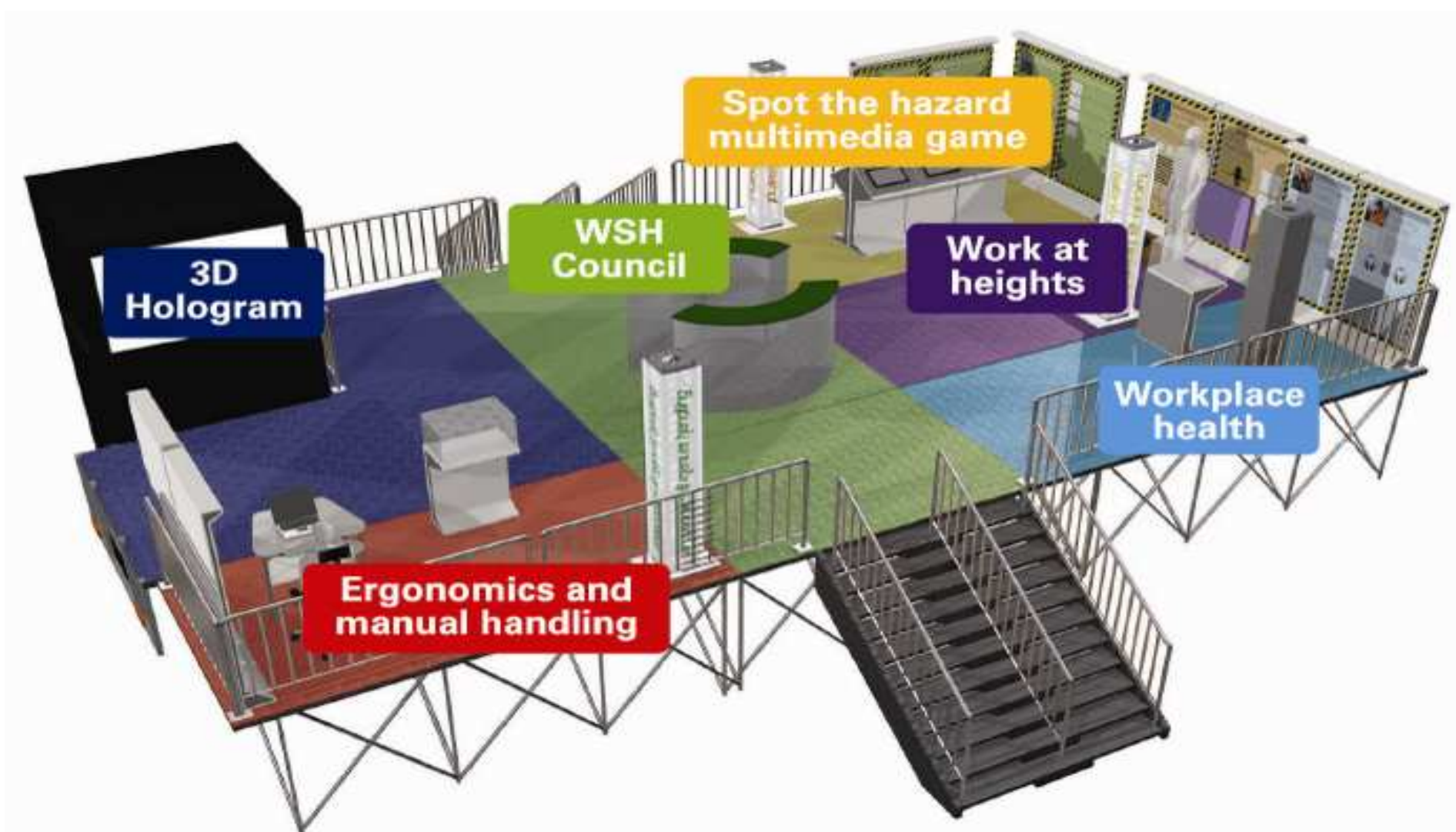
Highlight of Campaign : Mobile Exhibition Container





NWSH Campaign 2008

“Safety Starts With Me”





NWSH Campaign 2008

“Safety Starts With Me”

NWSH Campaign Promotional Materials

- Billboards
- Bus Stop Panels
- Bus Stop Shelter Ads
- Flyers
- Horizontal Banners
- Lamppost Banners
- Press Ads
- Posters
- “Safety Starts With Me” Logo

NWSH Campaign Radio Ads

- Pre-publicity English Radio Ad
- Campaign English Radio Ad
- Pre-publicity Chinese Radio Ad
- Campaign Chinese Radio Ad
- Pre-publicity Tamil Radio Ad
- Campaign Tamil Radio Ad



NWSH Campaign 2008 “Safety Starts With Me”

Billboards



Bus Stop Panels





NWSH Campaign 2008 “Safety Starts With Me”

**Bus Stop
Shelter Ads**



**Lamp Post
Banners**





NATIONAL WORKPLACE SAFETY AND HEALTH CAMPAIGN 2008

NWSH C

- Billboa
- Bus Sto
- Bus Sto
- Flyers
- Horizon
- Lamp
- Press A
- Posters
- "Safety

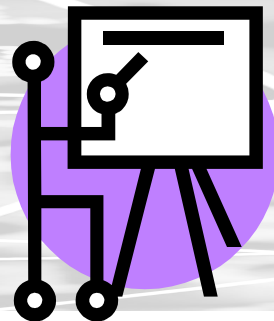


**SAFETY
STARTS
WITH
ME**



shine@work
safety & health involves everyone @ work





Over 200 Seminars on a wide range of WSH topics





e-Consultation Paper - (MND 200703)



lic

File Edit View Favorites Tools Help



Address

Links



[Ministry of Manpower](#) > Public Consultation on WSH (Noise) Regs / WSH (Medical Examinations) Regs / WSH (Abrasive Blasting) Regs

Target Audience : Public

Consultation period from 03/12/2007 03:15:35 PM to 14/12/2007 03:15:45 PM

Status : Closed

SEND TO FRIENDS

PRINTER FRIENDLY

CONSULTATION ON

- (1) DRAFT WORKPLACE SAFETY AND HEALTH (NOISE) REGULATIONS,
- (2) DRAFT WORKPLACE SAFETY AND HEALTH (MEDICAL EXAMINATIONS) REGULATIONS AND
- (3) DRAFT WORKPLACE SAFETY AND HEALTH (ABRASIVE BLASTING) REGULATIONS

AIM

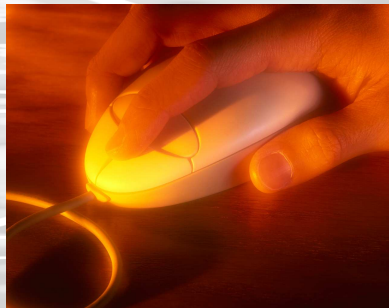
The Ministry of Manpower (MOM) would like to invite feedback from members of the public on the following 3 draft Regulations:

- (a) **Workplace Safety and Health (Noise) Regulations.** This draft Regulations will replace the Factories (Noise) Regulations.
- (b) **Workplace Safety and Health (Medical Examinations) Regulations.** This draft Regulations will replace the Factories (Medical Examinations) Regulations; and
- (c) **Workplace Safety and Health (Abrasive Blasting) Regulations.** This draft Regulations will replace the Factories (Abrasive Blasting) Regulations

PRINCIPLES OF REVIEW

2. The purpose of the review is to update and align the provisions to the new Workplace Safety and Health Act. This includes:

2.1 The purpose of the review is to update and align the provisions to the new Workplace Safety and Health Act. This includes:



Collection of Workplace Incident Data via iReport

online reporting system for accidents, dangerous occurrences and occupational diseases

http://160.96.185.83/ESvcController?system=spanp&module=internet - (MND 200703)


File Edit View Favorites Tools Help

Back Forward Stop Home Search Favorites

Address http://160.96.185.83/ESvcController?system=spanp&module=internet Go

Y! spring singap Search Web My Web Answers Mail Movies News My Yahoo! Sign in

 **MINISTRY OF MANPOWER**

 **Welcome to iReport**

 **Singapore Government**
Integrity • Service • Excellence

[Home](#) | [Contact Us](#) | [FAQ](#) | [Rate this e-Service](#)

iReport is an online reporting system for:

- Accidents, [Dangerous Occurrences](#) and [Occupational Diseases](#) under the Workplace Safety and Health (WSHA), (Incident Reporting) Regulations and/ or
- Accidents and Occupational Diseases under the Workmen's Compensation Act (WCA)

Immediate notification for fatal cases and dangerous occurrences

I want to report	Other Functions	Useful Guides
<ul style="list-style-type: none">An accident An accident occurring in the course of a person's work that resulted in death or injury and reportable under WSHA and/or WCA.A dangerous occurrence A dangerous occurrence is a serious workplace incident but which may or may not involve the death or injury of any person at work. Only dangerous occurrences listed in WSHA need to be reported to MOM.An occupational disease A disease contracted as a result of an exposure to risk factors from work activity. Only occupational diseases listed in WSHA and WCA need to be reported to MOM.	<ul style="list-style-type: none">Retrieve a draft notification After saving your notification, you can retrieve your draft notification for review and completion before submission.View Submitted Notification After submitting your notification, you can retrieve your notification for print and download as PDF.Update the number of days of medical leave for a notification submitted earlier If there is an extension of medical leave you can update the number of additional days for the notification you had earlier submitted.	<ul style="list-style-type: none">Guide to Workplace Safety and Health (Incident Reporting) RegulationsGuide to Workplace Safety and Health ActGuide to Workmen's compensation ActUser Guides for iReport

[Privacy Statement](#) | [Terms of Use](#)

Please do not use browser Back or Forward button as this may alter your results.

© 2005 Government of Singapore



“Leveraging on public’s eyes and ears”



**Where are the
safety harnesses?**

*Workers on ledge
cleaning dangerously*



*“What happens if one of the
children gets injured? It’s an
accident waiting to happen.”*

**Photos taken by members of
public sent via email or MMS**

**Ministry of Manpower Safety Hotline:
63171111**



Upcoming : integrated OSH (iOSH) system

Expected Launch : Mar 2009

Home - iOSH Project - (MND 200703)

File Edit View Favorites Tools Help

Back Forward Stop Home Search Favorites Mail Print Wordpad Yahoo! Messenger

Address <http://www1.intranet.mom.gov.sg/OSHD/iOSH/default.aspx> Go

Search Web My Web Answers Mail Movies News My Yahoo! Sign in

Home Documents and Lists Create Site Settings Help

iOSH
Integrated Occupational Safety and Health System

iOSH Modules

- Case Mgmt & Investigation
- Disbursement & Billing
- Feedback & Appeal Mgmt
- Incident Reporting
- Inspection and Engagement
- Licensing
- Penalty
- Surveillance
- Work Injury Compensation
- Portal
- Business Intelligence

iOSH Modules

- Case Management & Investigation
- Disbursement & Billing
- Feedback & Appeal Management
- Incident Reporting
- Inspection & Engagement
- Licensing
- Penalty
- Surveillance
- Work Injury Compensation
- Portal
- Business Intelligence

Schedule of Work Activities

There are currently no upcoming events. To add a new event, click "Add new event" below.

☐ Add new event

[Save and Close](#) | [Go Back to Survey](#)

Do you like the new iOSH Project Workspace? *

☐ Yes

☐ No

Project Schedule

Local intranet

19th Asian Conference on Occupational Health

17 - 19 September 2008

Suntec Singapore

www.acoh2008.com



Redefining Occupational Health in the Face of Globalisation



The 6th Occupational
Safety+Health
Exhibition for Asia

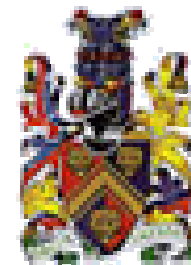
17 - 19 Sept 2008

Suntec Singapore

www.osha-singapore.com

3rd Regional Public Health
and Occupational Medicine
Conference

16 – 17 Sept 2008





See you at the conference this September





Towards a Safe & Healthy Workplace For Everyone

Visit MOM web site at www.mom.gov.sg/oshd

Visit WSH Council web site at www.wshc.gov.sg



Presenter Contact Details :

Toh Jing Yi

Tel: +65 6324 7543

e-mail: TOH_Jing_Yi@mom.gov.sg