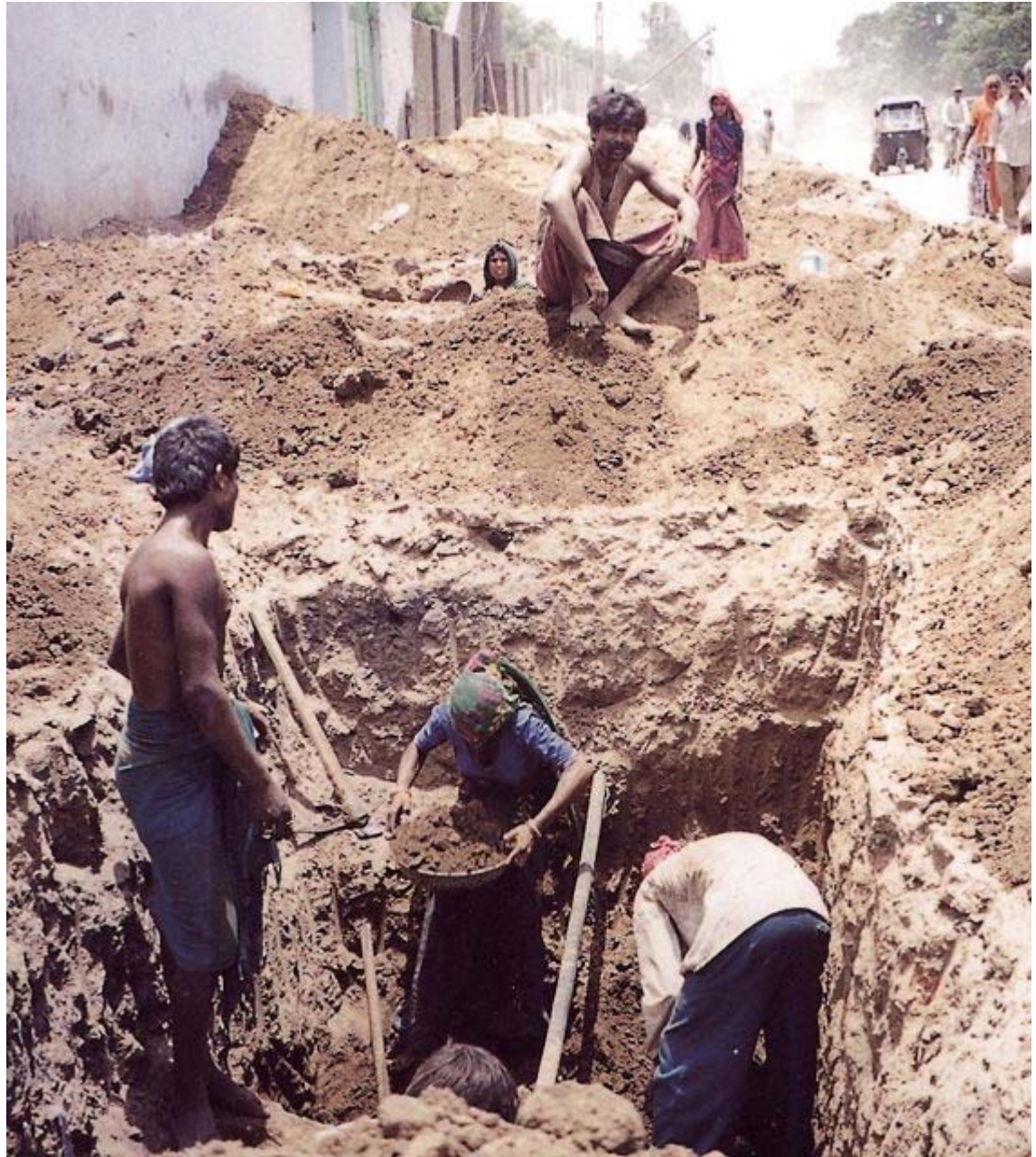


**Construction
occupational
safety and
health
for
construction
workers**



A training programme for construction workers

**This course is part of the ILO's
Construction OS&H**

**A systematic programme for improving procedures and
practices for the benefit of all who participate in this major
and socially important industry**

Welcome by the Course Tutor

Introductions

Please spend 10 minutes preparing a 2-3 minute talk to introduce yourself, saying:

Who you are

Your experience as a client of construction projects

Why you came on this course

What you expect to learn

This programme is intended to provide flexible training for Trade Unionists and workers in the building trades who are interested in strengthening their own activities on safety and health at work and who wish to improve their knowledge of safe and healthy ways of working on construction sites.

The training activities in this programme are for:

- Trade Union Health and Safety Representatives
- Discussion groups of workers and union members

The trades union contribution to this programme is in three sections:

1. The Trade Union Approach to Occupational Health and Safety
2. Organising for a safe and healthy workplace
3. Getting management to Make improvements

The following construction site operations will be explained:

- Welfare & project site
- Personal protective clothing & equipment
- General plant & equipment
- Vertical movement
- Horizontal movement
- Working at or below ground level
- Working at height

At the end of the programme ...

We shall discuss some action plans, evaluate this programme and review some basic site safety precautions

Summary of the programme

Week No	Module code	MODULE SETS & TITLES
1	A	Introduction
2	B	The Trade Union approach to safety and health 1
3	C	The Trade Union approach to safety and health 2
4	D	Welfare and project site
5	E	Personal protective clothing and equipment (PPE)
6	F	Organising for a safe and healthy workplace 1
7	G	Organising for a safe and healthy workplace 2
8	H	General plant and equipment
9	I	Vertical movement
10	J	Horizontal movement
11	K	Working at or below ground level
12	L	Working at height
13	M	Getting management to make improvements 1
14	N	Getting management to make improvements 2
15	O	Action plans and conclusions

Main aims

- Identify the main safety and health problems in our workplaces
- Develop a Trade Union approach to occupational safety and health
- Investigate hazards and risks at work on construction sites
- Develop skills in the safe and healthy use of common plant and equipment
- Develop skills in working in safe and healthy ways when working on common construction site activities
- Build workers' involvement, awareness, and support on occupational safety and health
- Develop Trade Union organisation to ensure that employers eliminate or control risks
- Develop confidence, knowledge and skills

The way we train

Trade union training on health and safety should be:

- Motivating
- Active
- Democratic

It should be action oriented so that it will:

- Lead to practical action in the workplace
- Improve safety and health conditions for workers

Experience has shown us that Trade Union education should be based upon the principles of co-operation and sharing.

These are the basic principles of Trade Union democracy.

To encourage this process, each of the subjects is based on activities which:

- Are designed to be worked on by small groups of participants
- Have aims describing what should result from the work
- Have a task defining what the small group should do

Allow groups to report back, compare ideas, and reach conclusions

Introductory quiz

This quiz asks you some questions of what you know about occupational safety and health as you join this course.

It will be followed by a discussion so that course members may share their knowledge and experience.

Be prepared to discuss your answers.

Introductory quiz

1. Think about where you work now. What are the main hazards (dangers) that worry you?
2. How can the Trades Unions help to make your workplace safer and healthier?
3. What is a 'tool box briefing'?
4. What is a Site Safety Committee and what does it do?
5. As the Trade Union Safety Rep, you are about to inspect a simple scaffold. What would you look for?

Introductory quiz

6. As the Trade Union Rep on a site, what do you do when there is a serious accident?
7. List the five most important welfare facilities required on a construction project.
8. A worker is part of a crew placing concrete for a large ground floor slab. What items of personal protective equipment should the worker be wearing?
9. Explain what precautions you should take when excavating a long trench three metres deep in fairly firm, dry soil.
10. You are about to climb a long ladder. List at least five things that you would check before setting foot on it.

Introductory quiz

So, let us go through the questions one-by-one and hear some answers from each of you

Introductory quiz

Thank you for taking part in this quiz.

The Course Tutor has noted your responses.

At the end of the course, you will be given this quiz again, with the same questions, and we can then discuss how your answers have changed by taking part in the course.

Discussion on pre-course activity: OS&H survey

Reminder

AIMS

To help us to:

- Start to discuss OS&H with the course participants
- Obtain their views and other information
- Make sure that the course is relevant to their working lives

TASK

Before you come on the course, have a short discussion with a cross-section of people at work. Make a note of their answers to the following questions, and bring your notes along to the course.

Questions & information

What are the main safety and welfare concerns that you have at work?

What is your organisation doing to protect your safety, health and welfare?

Can the management of your organisation do more on safety, health and welfare matters?

Can the Trades Unions in your organisation do more on safety, health and welfare matters?

Try to obtain information that you think will be helpful on the course. For example:

- Safety and health policies
- Safety and health plans for construction projects
- Design guides for safety and health for construction works
- Examples of safety and health contract clauses
- Hazard and risk analyses
- Physical safety precautions (eg safety fencing, personal clothing and equipment)
- Welfare provision on project sites
- Site induction
- Trades union policies on OS&H
- Collective Bargaining Agreements relating to Occupational Health and Safety
- Safety Committee Minutes
- Other information on health and safety you think may be useful

What workers & Trade Union members think

AIMS

To help us to:

- Discuss views on health and safety in our workplaces
- Develop a Trade Union approach

TASK

In your small group, discuss what workers and union members said during the pre-course survey. Prepare a report on:

- The main safety, health and welfare problems identified
- What they think the employer is doing, and what the Union could do on safety and health

Elect a spokesperson to report back

Introduction to occupational safety & health

In construction at least 108 000 workers are killed on site every year, that figure represents 30 per cent of all fatal injuries.

That is one person dying every five minutes because of bad, and illegal, working conditions.

The construction industry has a deservedly notorious reputation as being dirty, difficult and dangerous.

Introduction to occupational safety & health

Workers are killed, injured and made sick whilst carrying out routine jobs.

The hazards are well known and so are the prevention measures.

The overwhelming majority of "accidents" are absolutely predictable and preventable.

They are 'incidents' not 'accidents'.

They are caused by failure to manage risks or by straightforward negligence on the part of the employer.

ILO's "Decent work" programme

“Work is central to people's well-being. In addition to providing income, work can pave the way for broader social and economic advancement, strengthening individuals, their families and communities. Such progress, however, hinges on work that is decent. Decent work sums up the aspirations of people in their working lives.”

“The primary goal of the ILO today is to promote opportunities for women and men to obtain decent and productive work, in conditions of freedom, equity, security and human dignity.”

Programme

In this session, the Course Tutor will explain the programme for the course in some detail.

Please ask any questions you may have about the course and how it will affect you.

